

# CHRIST CHURCH CōE PRIMARY SCHOOL

## An 'ETHOS-BASED MODEL of EXCELLENCE'

At Christ Church Primary School, we are using an ethos-based model of excellence to embed a **CULTURE of CONSTANT IMPROVEMENT**.

This includes considering how we can 'GO BEYOND' in acknowledgment that we are **MORE THAN JUST A SCHOOL**.

At the core of this process are the staff and governors, who have a:

- Deep personal commitment to the whole-school community
- Sense of service – to our pupils, their families, and the wider community



The overall aims of this model is to:

- Discover what is possible
- Help pupils - & staff - be the best they can be

Staff have been encouraged to remember three 'TOP TIPS.

We need to remember to...

- (1) Change our perception of what is possible
- (2) Be the 'banner-waver' for how the future can be
- (3) Challenge ourselves to keep climbing & seeking to improve

Adopting an ethos model of excellence does not mean it is always necessary to radically change what we are doing; we need to build on the positive things we are already doing and help good ideas GROW & FLOURISH.

Or, to put it another way, we need to...

*"TWEAK to TRANSFORM"*

Within our vision, the staff and governors are clear that we want to:

**give children the opportunity to shine**

The Christ Church staff are committed to improving the educational provision we offer.

To do this, we know that we need to work hard, work smart and work clever.

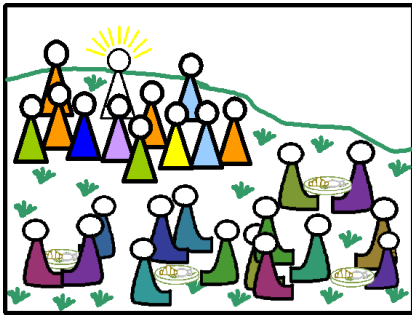
At the same time, the staff have been encouraged to:

- Remember who you are
- Enjoy the journey
- Recognise what we are achieving
- Have perspective
- Don't take yourself too seriously
- Be brave and...

**DARE TO BE DIFFERENT!**



As a Church of England school, it is important to be mindful of the biblical context for the ethos model of excellence. The staff have looked at the story of Jesus and the disciples feeding the five thousand from a few loaves and fishes.



This story teaches us that we can achieve great things if we work as a **team**. It also shows us that **everyone is important** within that team.

More than that, the feeding of the five thousand encourages us to enjoy the mystery of miracles and to see the 'miracles' that take place every day in our school community as we transform the lives of the children we work with.

We are a school community which values spirituality.

We believe that 'spirituality' can be defines as:

**“Breathing life into our school, into each other and in all we do”**

We believe that our school 'spirit' come from the people who shape it and breathe life into it...

US!



A fundamental aspect of the ethos model of excellence is that we believe our children need to experience:

**“Life in all its fullness” John 10:10**

We try to think about...

What our children **NEED** and what our children **DESERVE**.

The **CORE PRINCIPLE** of the ethos model of excellence is that we want to help children **grow into being the best they can be**.

This can be called

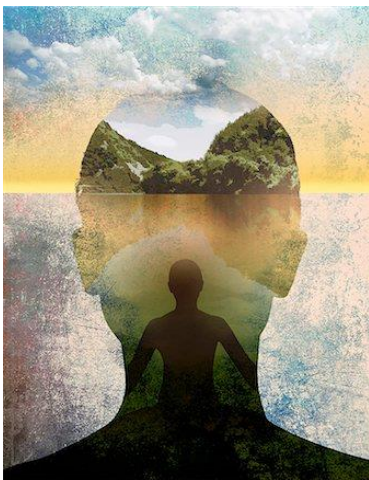
*“Profound Personal Development”*

or **Deep Personal Growth**



But what does this mean?

Through DEEP PERSONAL GROWTH, a child should obtain a *‘better sense of self’*.



In essence, it is about helping a child to

Feel good about themselves & feel satisfied with life.

WHOLENESS

COMPLETE

PEACE

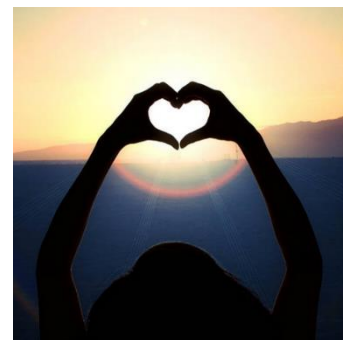
TRANQUILITY

WELL-BEING

So, how can we deliver... “Life in all its fullness”?

The staff at Christ Church understand that this process needs to start with how children see themselves. We believe that children need to know who they are and who they want to be. They need to feel valued and worthy, and understand that they can learn from their mistakes and that there are always people who can help them.

In order for children to be able to *“Love your neighbour as yourself”*, our pupils need to recognise that they are special and loved. It is our job to create a school ethos where this can be embedded.



Beyond this, we need to:

- **Provide opportunities for children to experience as much as they can**
- **Make school the ‘world of wonder’ the children deserve**

## *“I am the gate”* JOHN 10:9

Just as Jesus describes himself as a gateway, the staff at Christ Church have been encouraged to see themselves as the people who can OPEN THE DOOR to enable children to excel.

To do this, we need to provide the opportunities and possibilities; we need to make learning meaningful and memorable.



Staff have been told we need to...

- ‘lift the lid’ and ‘open the window’
- let children – and each other – flourish and excel
- let children go beyond their expectations

At the heart of the ethos model of excellence, staff are committed to...

*Let their light shine & to offer their light to others*



This is how the ‘**ethos model of excellence**’ will support our journey from the ordinary to the **EXTRAORDINARY**.