



CHRIST CHURCH NEWSLETTER

18/06/2021

HEALTHY FAMILY TEAM

Advice Line: **0300 1233387** (Option 4)
Monday- Friday 9am- 4.30pm

Parentline number: **07520 619919**
Monday- Friday 9am- 4.30pm

More information about how the Healthy Family Team can support you can be found on their website:

<https://www.nottinghamshirehealthcare.nhs.uk/healthy-family-teams>

JOB OPPORTUNITY

The **SCHOOL-AGED IMMUNISATION SERVICE** are looking for motivated, caring individuals with relevant experience to support them during this year's flu programme.

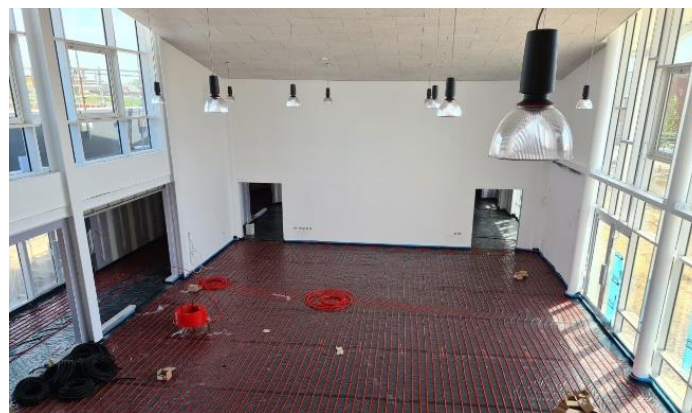
Successful candidates will be required to work 3-5 days a week from 9-3pm.

More information can be viewed at <http://jobs.nottinghamshirehealthcare.nhs.uk/job/v3212167>

The closing date for applicants is **24th June 2021**.

We are getting very excited about moving to the new school now... it looks **AMAZING!**

This is the front of the school and the school hall (when they were fitting the underfloor heating) ☺



Prayer

Heavenly Father,
We pray for the builders who are building our new school.
We pray for dry weather as they try to finish and landscaping.
We pray for their safety as they fit the electrics and lighting.
We thank you for the opportunity to be part of the new school from the beginning.

Amen

Lots of you are asking about when you can visit the new site. Unfortunately, we don't move to Middlebeck until late August. However, we do have plans to help with the transition:

- We are liaising with the developers to try to take our KS1&2 pupils to see the outside of the building before the end of term.
- We hope to make a video and/or photo tour - once it looks more like a school inside!
- We will produce maps of the site (showing entrances and classrooms) before Sept.
- We hope to organise an Open Afternoon before start of term. This is most likely to be on Tuesday 31st August, before children start on Thursday 2nd September. Confirmation and further details will follow before the end of this term.

CONFIRMATION OF TERMS DATES & INSET DAYS 2021-22

Autumn Term

INSET Tuesday 31st August & Wednesday 1st September
CHILDREN START on Thursday 2nd September
HALF TERM HOLIDAY 16-31st October /
children return on Monday 1st November
LAST DAY of TERM Friday 17th December

Spring Term

INSET Tuesday 4th January
CHILDREN START on Wednesday 5th January
HALF TERM HOLIDAY 12-20th February /
children return on Monday 21st February
LAST DAY of TERM Friday 1st April

Summer Term

INSET Tuesday 19th January
CHILDREN START on Wednesday 20th April
May Bank Holiday (school closed) Monday 2nd May
HALF TERM HOLIDAY 28th May - 5th June /
children return on Monday 6th June
LAST DAY of TERM Thursday 28th July

We still have one Inset Day to confirm and will let you know the date for this in advance.

SCHOOL TIMINGS from September 2021

NURSERY SESSIONS

Morning session 8.45 – 11.45
Lunch club 11.45 – 12.30
Afternoon session 12.30 – 3.30

MAIN SCHOOL

MORNING

- Gates will be open **8.40 – 8.55am**
- The register will be done at 8.55am

AFTERNOON

- Gates will open at 3.15pm
- Children can be collected between **3.15 and 3.30pm**



N.B. **Each class has its own external door for the start and end of the day.** Teachers will welcome and see the children out at the start and end of the day. Children must be brought to the classroom door and collected at the end of the day by an adult.

Breakfast Club will start at 7.45am and will cost £3 per session.

We hope to run a full range of **After-School Clubs** from 3.30pm to 4.30pm.

More information will be sent home about after-school clubs in September with clubs starting w/b 6th September.

- Pedestrian gates for the main school are on Bowbridge Lane (near traffic lights) and on Bowbridge Square (at front of school). These will only be open at the start and end of the school day.
- The Nursery entrance is a separate entrance on Bowbridge Square.
- Parents & carers will need to come to the main entrance if they arrive late or need to speak to Mrs Dickinson in Office.
- Parents & carers can park in school car-park (on Flaxley Lane) at the start & end of day. This should help alleviate congestion around school.
- We are hoping that the majority of families will walk to school. The new school also has plenty of secure cycle / scooter parking on site!